



Arginase-1 (ABT-Arg1) mouse mAb

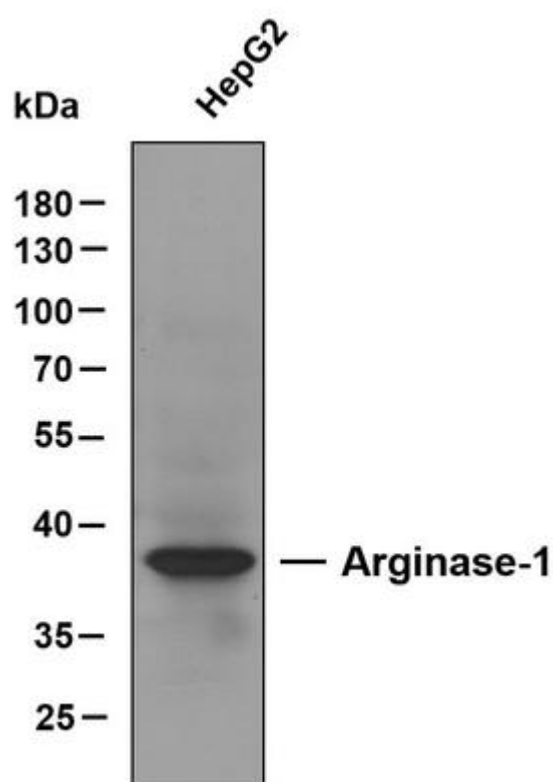
货号	YP-Ab-18163
同位型	IgG
应用	IHC;WB;IF;ELISA
种属	Human
基因名称	ARG1
蛋白名称	Arginase-1 (EC 3.5.3.1) (Liver-type arginase) (Type I arginase)
免疫原	Synthesized peptide derived from human Arginase-1 AA range: 200-322
特异性	The antibody can specifically recognize human Arginase-1 protein. In western blotting of HepG2 cell lysate, the antibody can label a 35 kDa band corresponding to Arginase-1.
组成	PBS, 50% glycerol, 0.05% Proclin 300, 0.05%BSA
来源	Mouse, Monoclonal/IgG2b, kappa
稀释	IHC 1:200-1000. WB 1:500-2000. IF 1:100-500. ELISA 1:1000-5000
纯化工艺	Protein G
分子量	35kD
背景	Arginase-1 is a key enzyme in the urea cycle, which can catalyze the decomposition of arginine into ornithine and urea. Highly specific expression in liver tissue, but not in bile duct epithelial cells, hepatic sinusoidal endothelial cells, Kupffer cells and vascular endothelial cells.
功能	catalytic activity:L-arginine + H(2)O = L-ornithine + urea.,cofactor:Binds 2 manganese ions per subunit.,disease:Defects in ARG1 are the cause of argininemia (ARGIN) [MIM:207800]; also known as hyperargininemia. Argininemia is a rare autosomal recessive disorder of the urea cycle. Arginine is elevated in the blood and cerebrospinal fluid, and periodic hyperammonemia occurs. Clinical manifestations include developmental delay, seizures, mental retardation, hypotonia, ataxia, progressive spastic quadriplegia.,induction:By arginine or homoarginine.,online information:Arginase entry,pathway:Nitrogen metabolism; urea cycle; L-ornithine and urea from L-arginine: step 1/1.,similarity:Belongs to the arginase family.,subunit:Homotrimer.,
细胞定位	Nuclear, Cytoplasmic
组织表达	Expression :Within the immune system initially reported to be selectively expressed in granulocytes (polymorphonuclear leukocytes [PMNs]) (PubMed:15546957). Also



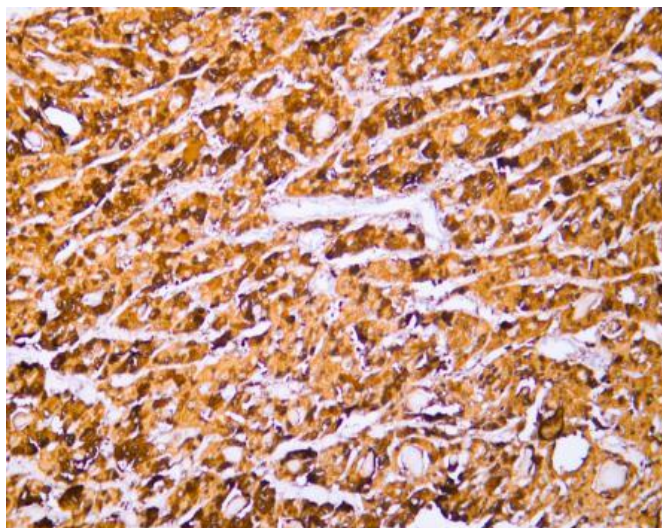
detected in macrophages mycobacterial granulomas (PubMed:23749634).
Expressed in group2 innate lymphoid cells (ILC2s) during lung disease
(PubMed:27043409).

浓度	1 mg/ml
储存	-15°C to -25°C/1 year(Do not lower than -25°C)
有关注意事项	Avoid repeated freezing and thawing!
使用建议	This product can be used in immunological reaction related experiments. For more information, please consult technical personnel.

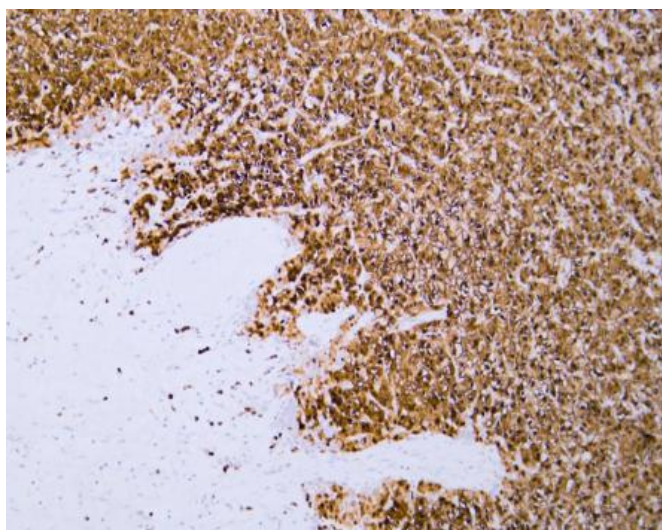
Products Images



Whole cell lysates of HepG2 were separated by 10% SDS- PAGE, and the membrane was blotted with anti-Arginase-1 antibody. The HRP-conjugated anti-Mouse IgG antibody was used to detect the antibody.



Human hepatocellular carcinoma tissue was stained with anti-Arginase-1(ABT-Arg1) antibody.



Human hepatocellular carcinoma tissue was stained with anti-Arginase-1(ABT-Arg1) antibody.